



MAG9000 PORTABLE BACKPACK CUTTING SYSTEM

Drop a serious amount of steel in half an hour on a single charge. Weighing in at a fractional 16 pounds, this featherweight backpack cutting system can be taken almost anywhere to cut almost any material in seconds. Consider the possibilities of thirty minutes of continuous cutting to melt through ferrous and nonferrous materials with little effort. Used by repair technicians, field dismantling mechanics, emergency rescue personnel and more.

Pressurized oxygen is driven through their center of the oxy-flame tube focusing a ten-thousand degree particle flame to perform over 24 separate

processes, from cutting to piercing. Patented style oxy-flame tubes handle the scope of almost any assignment.

Oxy-flame tubes can be easily bent for access to difficult cutting areas often minimizing dismantling time. The longer flame tubes are favorites among heavy equipment personnel for piercing and removing pins. With no preheating, the focused particle stream can burn through rust, scale, paint, slag and even limited layers of concrete.

The cutting torch displays a thumb valve so the length of the flame can be adjusted with one hand on the fly. No other adjustments are required to

MAG9000

Backpack Cutting System

SINGLE 3000 PSI CYLINDER

pierce through 4" of steel in 4 seconds. Imagine the egress possibilities.

Weighing in as the lightest, most powerful backpack cutting torch in the world, the unit has proven popular with tactical as well as repair and salvage personnel on land and marine settings. The units can be submerged for underwater cutting when used by trained personnel. Without question, this portable unit raises the bar on performance and reliability.





Tactical Response

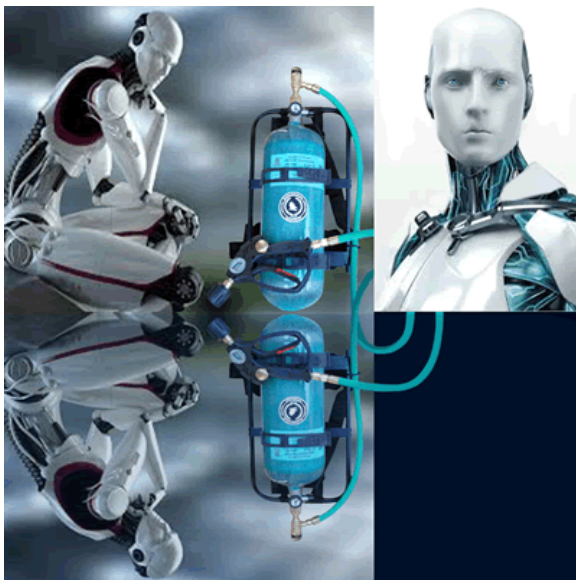
The MAG9000 FEATHERhawk™ is the lightest backpack cutting system on the market and used by SWAT, Police, Civil Defense, Prison Staff and Emergency Response personnel.

Lightest portable backpack cutting and breaching system on the market.

Ships with the following:

- Magnum cutting torch with flame adjusting thumb valve.
- Lightweight 3000 psi composite cylinder DOT certified and weighing only 8.9 lbs.
- CGA540 3000 psi cylinder valve with safety relief valve is the standard filling size for most oxygen supplies.
- Preset 150 psi precision oxygen regulator more than required for challenging cutting assignments.
- Alice backpack with patented cylinder straps.
- Patented style exothermic flame consumables come 50 per box.
- Deluxe 12 volt ignition system with deluxe float charger.
- Spare collet .375 size with Viton washer.
- Gloves and #5 burning glasses.
- Pelican carry case, military grade.
- Online instructional video.
- UPS 1 package.
- 120 lbs. approximate

Cuts for over 30 minutes





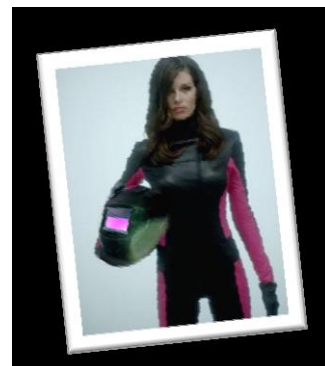
Tactical response and civil defense response are important considerations for adding a Magnum cutting system to our existing asset inventory.

12 volt ignition with military grade Odyssey dry cell battery



Coast Guard Breaching Torch

The MAG9000 is an excellent breaching torch for use on cargo doors and more when conducting search operations and need a fast, portable cutting system.



Fastest cutting process on the market

Duration: Consider the advantages of having approximately an hour of cutting at your fingertips to melt through any known material with its focused ten-thousand degree particle stream.

Speed: Consider the advantages of a process that can pierce through four inches of steel in four seconds or remove a foot of weld in eight second flat. Will readily cut through multiple layers of material where oxyacetylene washes out after the first layer. Unstoppable performance using oxygen. Safer than acetylene.

Power: When you consider ten-thousand degrees is four times the speed of oxyacetylene, you also realize the temperature breaks all material barriers allowing a single cutting rod to burn through almost any ferrous and nonferrous material with relative ease

Versatility: A single exothermic cutting rod/tube can be bent for many unique processes. Over 24 separate processes can be achieved by a mere change in hand position. Cut, gouge, pierce, and much more.

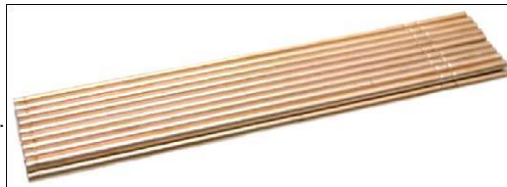
Safety: Oxygen based exothermic cutting eliminates the need for acetylene. We have also separated the ignition source from the backpack oxygen supply for additional safety measures.

HIGH PERFORMANCE CUTTING RODS



Cutting tubes after crimping to secure the internal fuel recipe

Seamless tubes are filled with a wire fuel recipe held in place with crimping. There is a two inches safety recess at the back of the cutting rod/tube to extinguish the exothermic process before it burns the cutting torch head. Nice feature.



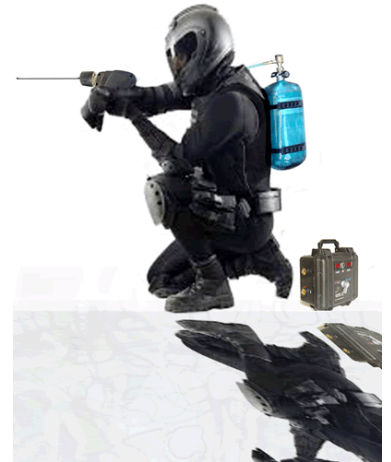
Cutting Rods are Size Selectable

You can order additional cutting rods in 18" or 36" lengths and in diameters ranging from 1/4" to 3/8".



Pallet size rod orders for large projects

For scrap and dismantling situations, we offer pallet size shipments of cutting rod to ensure projects are completed in a timely fashion. Customers working on military or government scrap projects frequently purchase pallets of cutting rod.



Backpack Cutting Torch

Super lightweight with numerous features and benefits for repair, maintenance, scrap, salvage, dismantling, emergency response, civil defense and much more.

Acme threaded head and head nut ensures reliable performance even in gritty sandy conditions. The large flat threads tend to purge foreign matter rather than seize.

A convenient thumb valve on the handle allows operators to adjust the length of the oxygen flame on the fly, without hesitation in cutting.

Releasing the trigger ensures the oxygen flow stops and the torch flame is extinguished. This is a deadman's valve configuration so of the torch is dropped, the flame stops.

An internal 4500 psi torch valve is over designed and over built deliberately to ensure years of maintenance free service in challenging cutting situations.

The offset nose on the torch valve eliminates oxygen bottlenecks at higher operating pressures, unlike torches that have a ninety degree oxygen delivery configuration.

The torch can be ignited with as little as ten pounds of oxygen flow and can be throttled up to cut 12" bucked hooks upon demand. Unbelievable performance.

The ergonomic torch handle design minimizes operator fatigue and is vented to ensure cool operation during cutting assignments.



1-800-957-4344 toll free

1-760-868-6748 alternate

ca92371@gmail.com

sales@magnumusa.com

www.magnumusa.com

Dealer inquiries invited. Write to the email address above with your product requirements and we will get back to you post haste.



MAG9000 Cutting System ships in a single box UPS/Fedex or DHL.



Navy Seal Breacher training in San Diego, California.

