



SPEED, POWER AND VERSATILITY

Top Valve Marine Cutting Torch Kit

MAG2000X

Top Valve Cutting Kit

At the top of our new cutting kit is the top valve cutting torch with the very latest features for divers and diving contractors in both fresh and salt water settings.

VALVE: The torch boasts a 5000 psi operating valve with stainless needle, stainless spring and ceramic valve ball. A ceramic ball ensures voltage does not arc across the needle, as can happen with stainless steel ball valves used by other manufacturers.

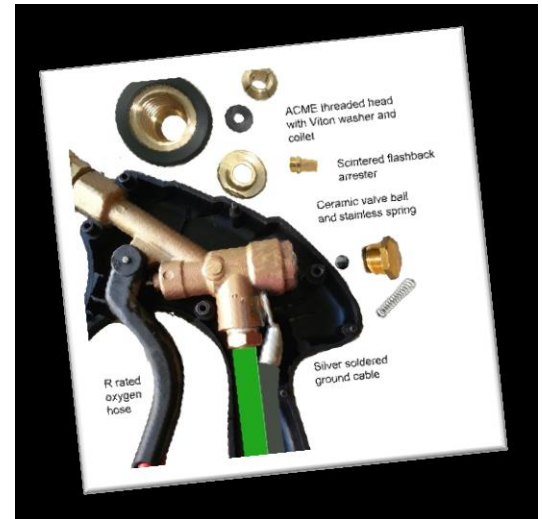
HEAD: The torch head boasts acme threads to discourage grit seizures in sandy environments. A mere quarter of a turn is sufficient to load and unload cutting rods or what are often referred to as cutting tubes.

Flashback: The top valve torch design displays a valve resting above the diver's hand for better flashback prevention, since flashbacks occur between the head and valve. Competitive torches allow potential flashbacks to pass through the diver's hand on the way to the lower valve.

Shock: A concern among divers is separating the current from the oxygen supply. The Sea Hawk does not require special transition hoses or connections because the high grade

oxygen hose connects directly to the torch valve. The voltage carrier bar is silver soldered directly to the valve stem for zero maintenance and permanently tight connections. The flat bar design allows for a smaller ergonomic torch handle. At the end of the carrier bar is a lug for convenient connection to the dive umbilical.

Collet: Inside the head rests a collet with Viton washer for sealing cutting rods and preventing head leaks. A sintered cone sits behind the washer to catch any potential flashback debris. In all, this is the most advanced marine cutting torch on the market.



Top Valve Design

Features matched with benefits make the Sea Hawk the most sophisticated torch on the market for repair, maintenance, scrap, dismantling and salvage.



Zero Maintenance

Merely rinse the torch in fresh water after use and it is ready for the next assignment. No complicated parts or transition connectors make this torch reliable and dependable in challenging underwater conditions.

FAST FACTS

98%

Of all repairs occur in twenty feet of water or less.

90%

Of underwater welding personnel never attended a formal training program.

MARINE REPAIR



Some like it HOT

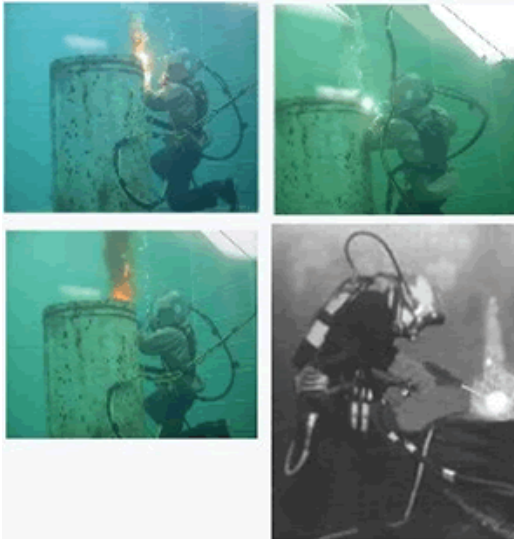
Where some divers burn cold, other divers burn hot and only turn the torch cold to exchange cutting rods. Exothermic marine cutting rods ignite with 150 DC amps and can be operated under the same current with special precautions.



Burns almost any material

Adding content into a column to create a sidebar is no different from adding text. As noted earlier in this template, apply the styles provided for headings, sidebar text, and even pictures to align them quickly and easily.

MAG2000X Ships with



- Magnum top valve cutting torch with 5000 psi valve. The valve far exceeds the required pressure rating for underwater cutting.
- Oxygen hose R grade, 30' .375 diameter connects to our oxygen regulator and will provide years of maintenance free service.
- Umbilical welding cable whip for connection to an existing DC welding cable.
- Two-stage precision oxygen regulator to ensure cutting pressure is sustained while the cylinder evacuates.
- One box of 3/8" x 18" marine underwater cutting rods, 50 each with 2" rear safety recess packed in wax boxes.
- Complimentary 400 amp welding handle with alligator jaws and twist barrel to adjust to welding rods up to 3/16".
- Complimentary wet welding electrodes wrapped for ultimate shelf life and performance.
- One spare collet with washer, .375" size accommodates any rival brand cutting rod 3/8" in diameter.
- Double throw disconnect to open and close the ignition circuit during rod exchanges.
- Online instructional video.
- UPS 2 package, 60 lbs.

Work smarter not harder

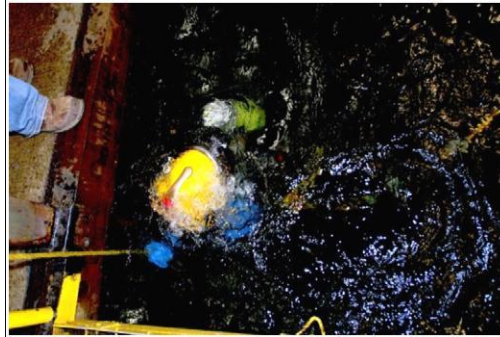
SINCE 1995

Magnum has been manufacturing high performance cutting and welding assets for marine and land use for twenty years. We offer an excellent balance of features and benefits without unnecessary frills that serve to only pad the package. Our products stand on their own. Each torch is meticulously assembled. Our cutting rods are wrapped and are designed for reliable burns. Our systems are balanced to give professionals exactly what they need in a rapidly changing economic market.

Dealer opportunities are available.

Thank you for choosing MagnumUSA.

**Top Valve
Marine
Cutting
Torch Kit**



1-800-957-4344 toll free

1-760-868-6748 alternate

ca92371@gmail.com

sales@magnumusa.com email

www.magnumusa.com web